

# Rampion 2 Wind Farm

## Category 6: Environmental Statement

### Volume 3, Chapter 25: Historic environment – Figures (Part 1 of 5)

**Date: August 2023**

**Revision A**

Document Reference: 6.3.25

Pursuant to: APFP Regulations 5 (2) (a), 5 (2) (m)

Ecodoc number: 004884771-01



## Document revisions

Revision	Date	Status/reason for issue	Author	Checked by	Approved by
A	04/08/2023	Final for DCO Application	WSP	RED	RED

# Contents

---

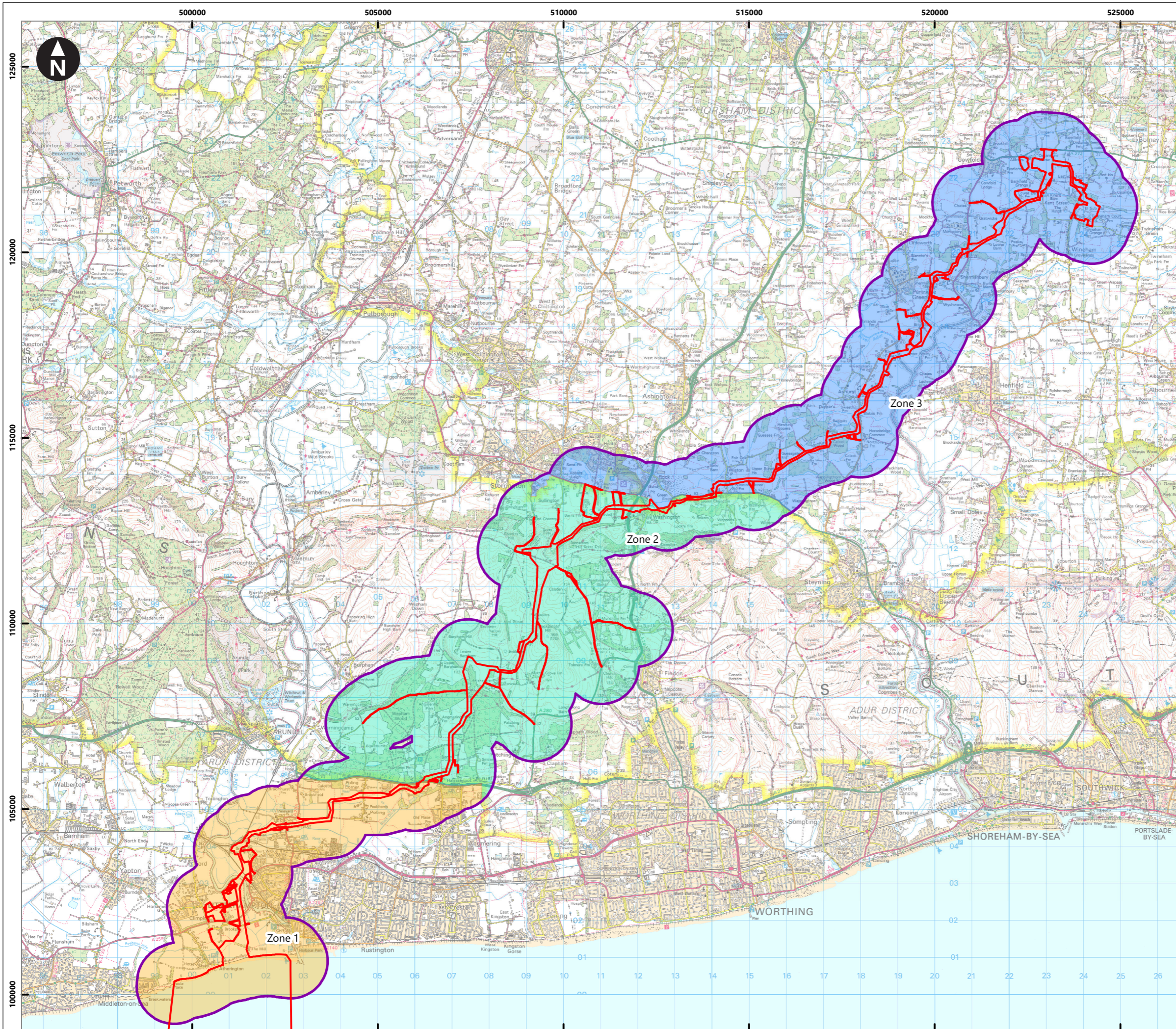
## List of Figures

Figure number	Figure Title	APFP number	Ecodoc number	Revision	Revision Date	Document Part
Figure 25.1	ES Assessment Boundary	5 (2) (a)	004866435-01	A	04/08/2023	Part 1 of 5
Figure 25.2a-h	Designated heritage assets within Study Area	5 (2) (m)	004866436-01	A	04/08/2023	Part 1 of 5
Figure 25.3a-x	HER monument records and UKHO wreck sites	5 (2) (m)	004866437-01	A	04/08/2023	Part 2 of 5
Figure 25.4a-h	Archaeological Notification Areas and features identified by remote sensing (LiDAR and aerial photographs) and historic maps	5 (2) (m)	004866438-01	A	04/08/2023	Part 3 of 5
Figure 25.5a-h	Designated heritage assets assessed for effects through change to setting from onshore development	5 (2) (m)	004866439-01	A	04/08/2023	Part 3 of 5
Figure 25.6a-h	Designated heritage assets with onshore cable corridor and ZTV	5 (2) (a)	004866440-01	A	04/08/2023	Part 4 of 5

---

<b>Figure number</b>	<b>Figure Title</b>	<b>APFP number</b>	<b>Ecodoc number</b>	<b>Revision</b>	<b>Revision Date</b>	<b>Document Part</b>
Figure 25.7a-c	Designated heritage assets with onshore substation and ZTV	5 (2) (a)	004891443-01	A	04/08/2023	Part 4 of 5
Figure 25.8a-c	Designated heritage assets with Bolney substation extension and ZTV	5 (2) (a)	004891444-01	A	04/08/2023	Part 4 of 5
Figure 25.9a-g	Designated heritage assets assessed for effects through change to setting from offshore development	5 (2) (a)	004891445-01	A	04/08/2023	Part 5 of 5
Figure 25.10a-g	Designated heritage assets assessed for effects through change to setting from offshore development and ZTV	5 (2) (a)	004891446-01	A	04/08/2023	Part 5 of 5
Figure 25.11	Historic environment Zone of Influence	5 (2) (a)	004891447-01	A	04/08/2023	Part 5 of 5

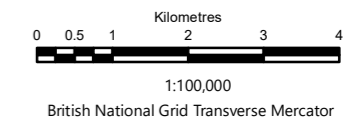




Service Layer Credits: Contains OS data © Crown Copyright and database right 2023  
 © Crown copyright and database rights 2023 Ordnance Survey 0100031673

**Key**

- Proposed DCO Order Limits
- 1km study area
- Zone 1
- Zone 2
- Zone 3



Rampion Extension Development

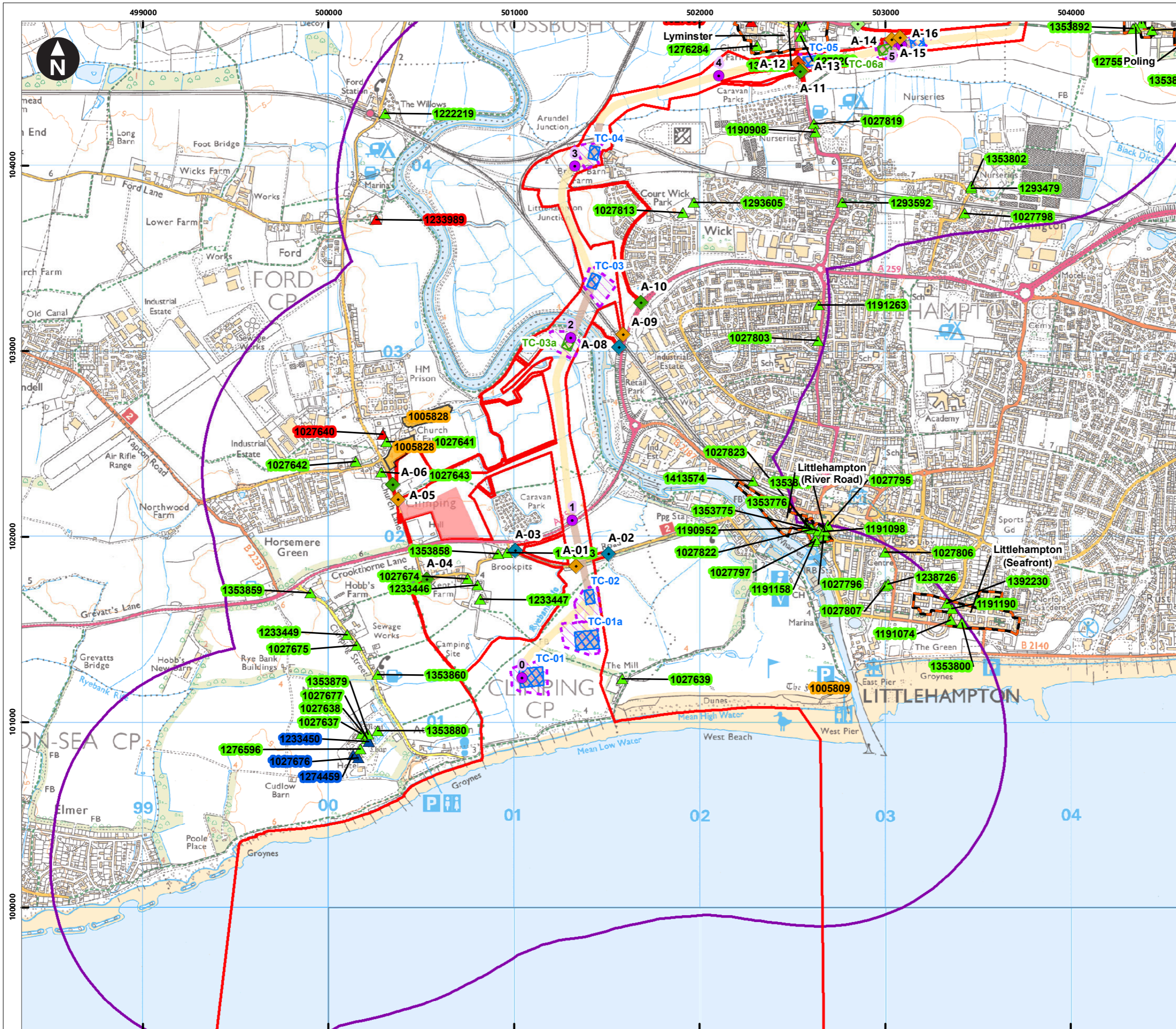


Rampion 2 Offshore Wind Farm  
 Figure 25.1 ES Assessment Boundary  
 Environmental Statement

System Identifier: 42285-WSPE-ES-ON-FG-OH-5364	Version: 1.0
---	-----------------

Company: WSP	Drawn By: SHEPS	Chk/Prvrd: ASTBD	Drawn Date: 12/07/2023	Status: Final
-----------------	--------------------	---------------------	---------------------------	------------------





Service Layer Credits: Contains OS data © Crown Copyright and database right 2023  
 © Crown copyright and database rights 2023 Ordnance Survey 0100031673

**Key**

- Proposed DCO Order Limits
- 1km study area
- Trenchless Crossing (TC) compounds
- Trenchless Crossing (TC) compound alternatives
- Trenchless Crossing (TC) limits of deviation
- Temporary construction compound

**Proposed onshore cable construction corridor**

- Indicative trenchless section
- Indicative open cut section

**Onshore cable route KM points**

- Onshore cable route

**Access from public highway**

- Construction
- Construction & operational
- Light construction
- Light construction & operational
- Operational

**Conservation Areas**

- Scheduled Monuments

**Listed Buildings**

- I
- II\*
- II

**Scale and Orientation**

0 0.1 0.2 0.4 0.6 0.8 Kilometres  
 1:20,000  
 British National Grid Transverse Mercator

**Map Information**

Rampion Extension Development

**Rampion 2 WIND FARM**

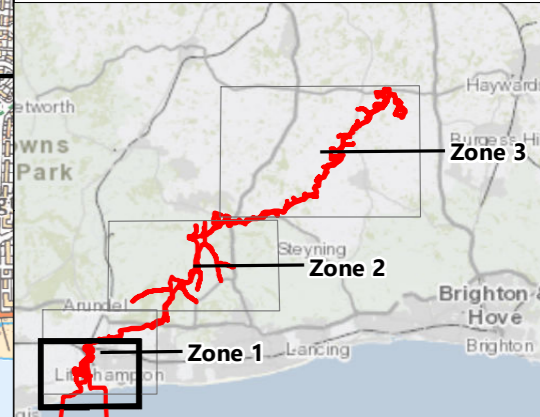
Rampion 2 Offshore Wind Farm

Figure 25.2a Designated heritage assets within Study Area

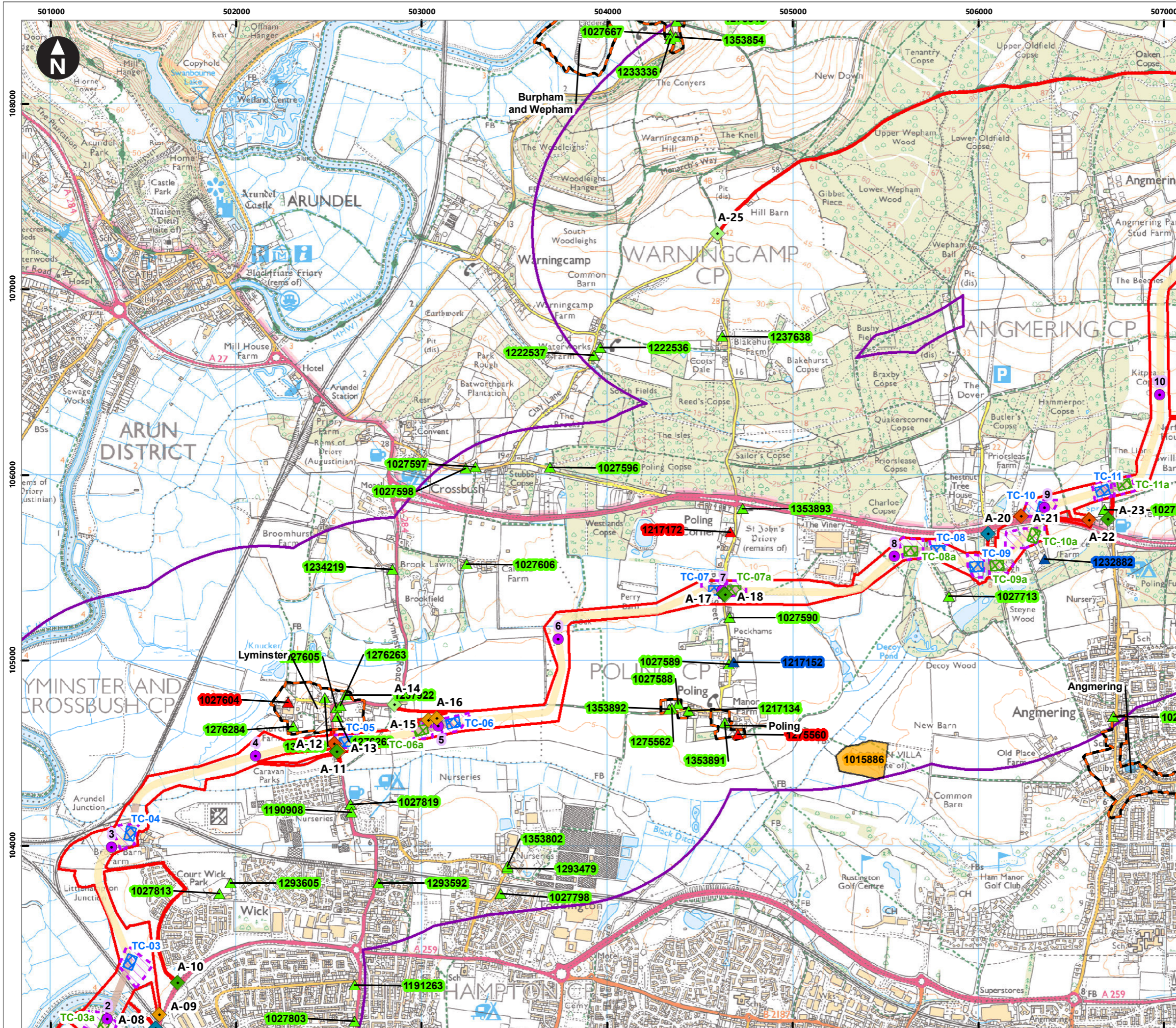
Environmental Statement

System Identifier: 42285-WSPE-ES-ON-FG-OH-6195      Version: 1.0

Company: WSP      Drawn By: SHEPS      Chk/Prvrd: ASTBD      Drawn Date: 24/07/2023      Status: Final







Service Layer Credits: Contains OS data © Crown Copyright and database right 2023  
 © Crown copyright and database rights 2023 Ordnance Survey 0100031673

**Key**

- Proposed DCO Order Limits
- 1km study area
- Trenchless Crossing (TC) compounds
- Trenchless Crossing (TC) compound alternatives
- Trenchless Crossing (TC) limits of deviation

**Proposed onshore cable construction corridor**

- Indicative trenchless section
- Indicative open cut section

**Onshore cable route KM points**

- Onshore cable route

**Access from public highway**

- Construction
- Construction & operational
- Light construction
- Light construction & operational
- Operational

**Conservation Areas**

- Scheduled Monuments

**Listed Buildings**

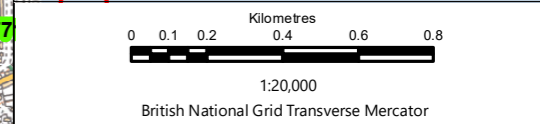
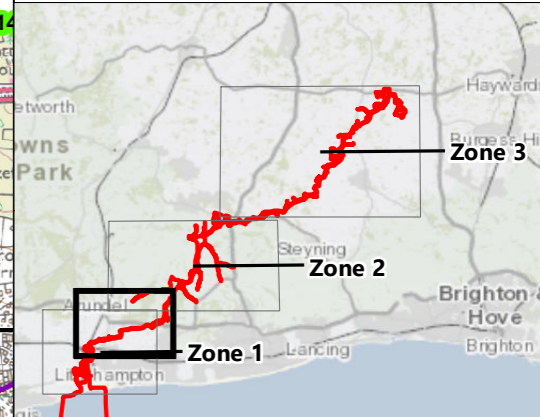
- I
- II\*
- II

**Figure 25.2b Designated heritage assets within Study Area**

Environmental Statement

System Identifier: 42285-WSP-ES-ON-FG-OH-6195      Version: 1.0

Company: WSP      Drawn By: SHEPS      Chk/Prvrd: ASTBD      Drawn Date: 24/07/2023      Status: Final



Rampion Extension Development

Rampion 2 Offshore Wind Farm

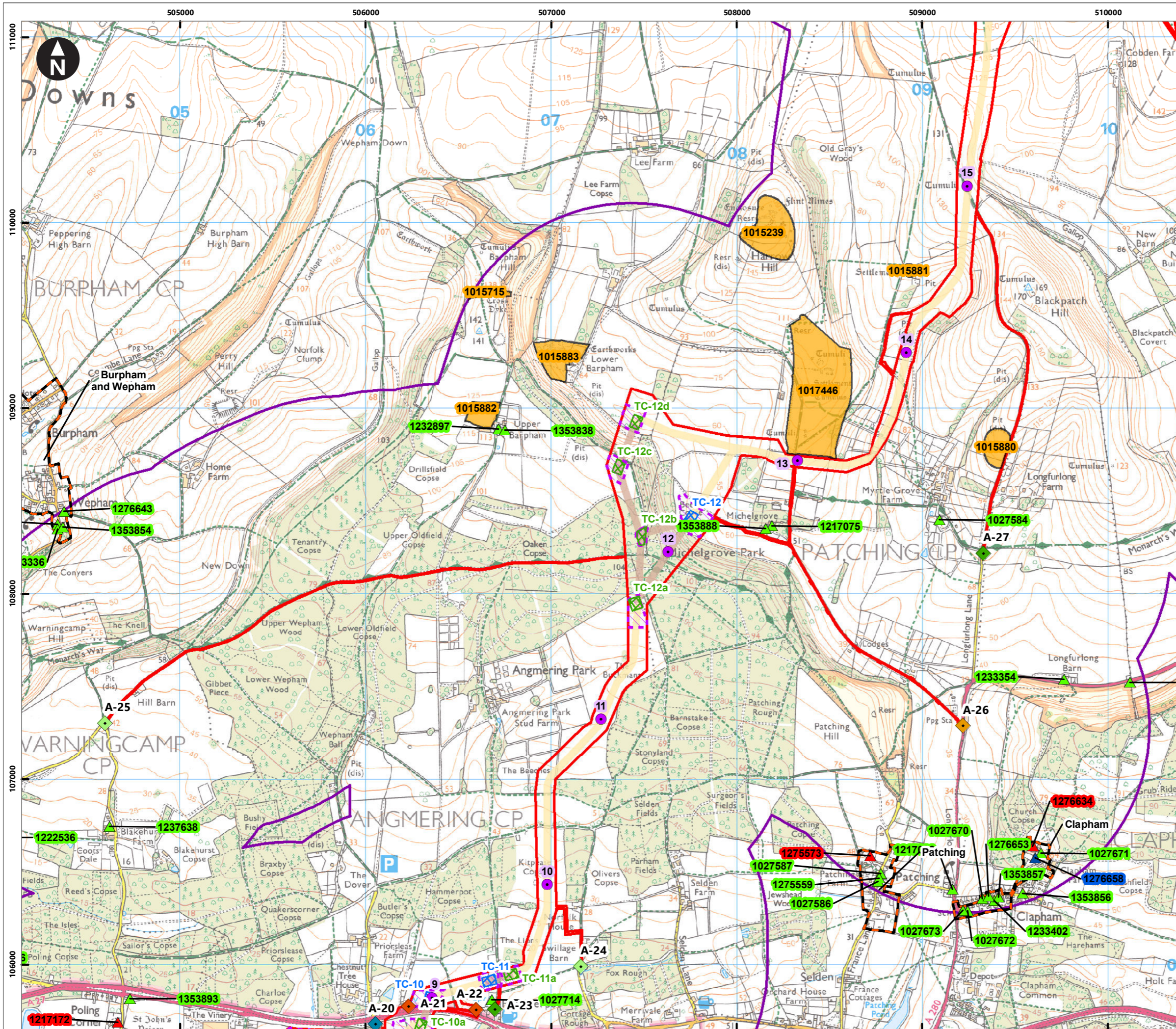
Figure 25.2b Designated heritage assets within Study Area

Environmental Statement

System Identifier: 42285-WSP-ES-ON-FG-OH-6195      Version: 1.0

Company: WSP      Drawn By: SHEPS      Chk/Prvrd: ASTBD      Drawn Date: 24/07/2023      Status: Final





Service Layer Credits: Contains OS data © Crown Copyright and database right 2023  
 © Crown copyright and database rights 2023 Ordnance Survey 0100031673

**Key**

- Proposed DCO Order Limits
- 1km study area
- Trenchless Crossing (TC) compounds
- Trenchless Crossing (TC) compound alternatives
- Trenchless Crossing (TC) limits of deviation

**Proposed onshore cable corridor**

- Indicative trenchless section
- Indicative open cut section

**Onshore cable route KM points**

- Onshore cable route

**Access from public highway**

- Construction
- Construction & operational
- Light construction
- Light construction & operational
- Operational

**Conservation Areas**

- Scheduled Monuments

**Listed Buildings**

- I
- II\*
- II

0 0.1 0.2 0.4 0.6 0.8  
 Kilometres  
 1:20,000  
 British National Grid Transverse Mercator

Rampion Extension Development

Rampion 2 Offshore Wind Farm

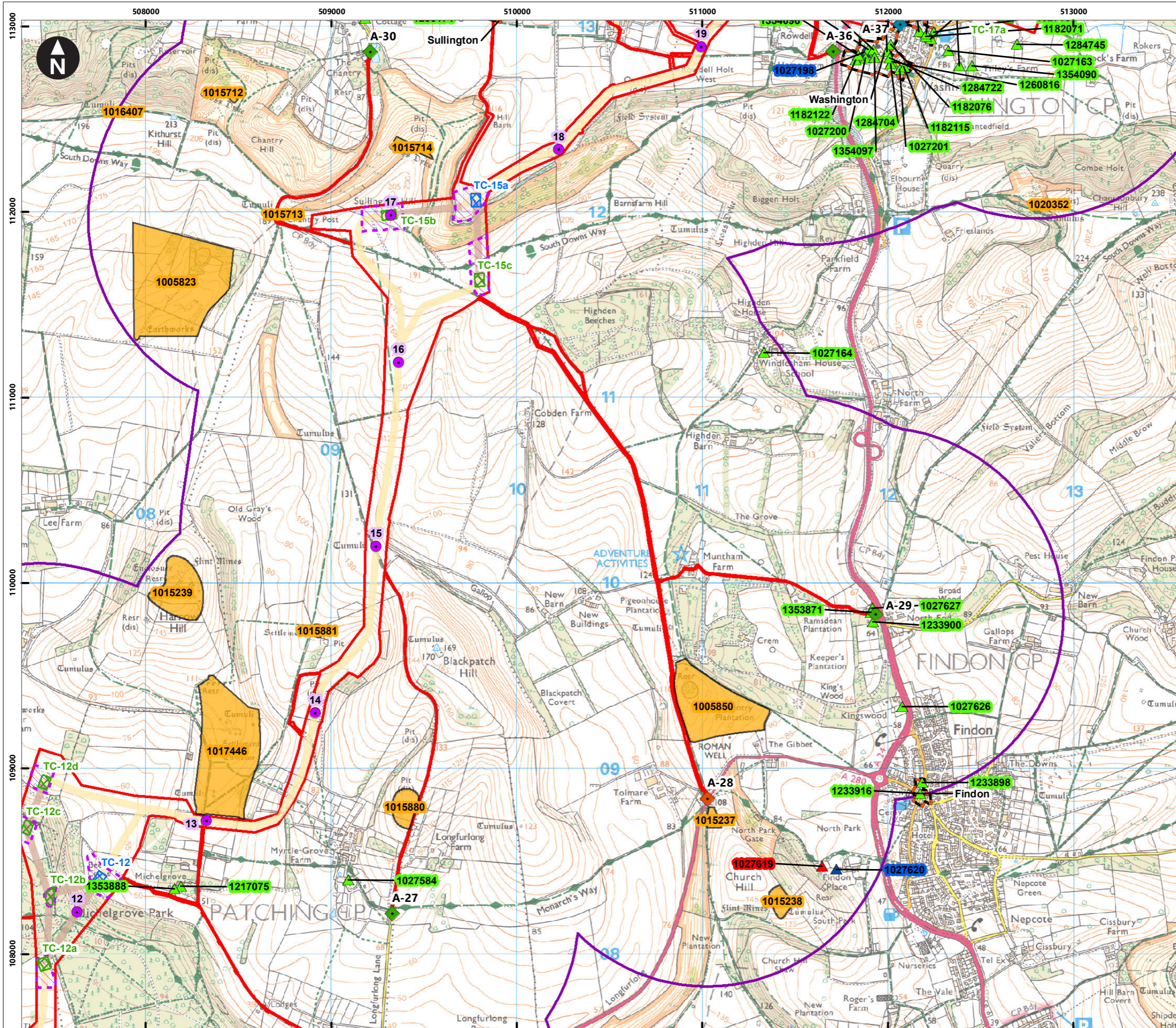
Figure 25.2c Designated heritage assets within Study Area

Environmental Statement

System Identifier: 42285-WSP-ES-ON-FG-OH-6195  
 Version: 1.0

Company: WSP	Drawn By: SHEPS	Chk/Prvrd: ASTBD	Drawn Date: 24/07/2023	Status: Final
--------------	-----------------	------------------	------------------------	---------------





Service Layer Credits: Contains OS data © Crown Copyright and database right 2023  
 © Crown copyright and database rights 2023 Ordnance Survey 0100031673

**Key**

- Proposed DCO Order Limits
- 1km study area
- Trenchless Crossing (TC) compounds
- Trenchless Crossing (TC) compound alternatives
- Trenchless Crossing (TC) limits of deviation

**Proposed onshore cable construction corridor**

- Indicative trenchless section
- Indicative open cut section

**Onshore cable route KM points**

- Onshore cable route

**Access from public highway**

- Construction
- Construction & operational
- Light construction
- Operational

**Conservation Areas**

- Scheduled Monuments

**Listed Buildings**

- I
- II\*
- II

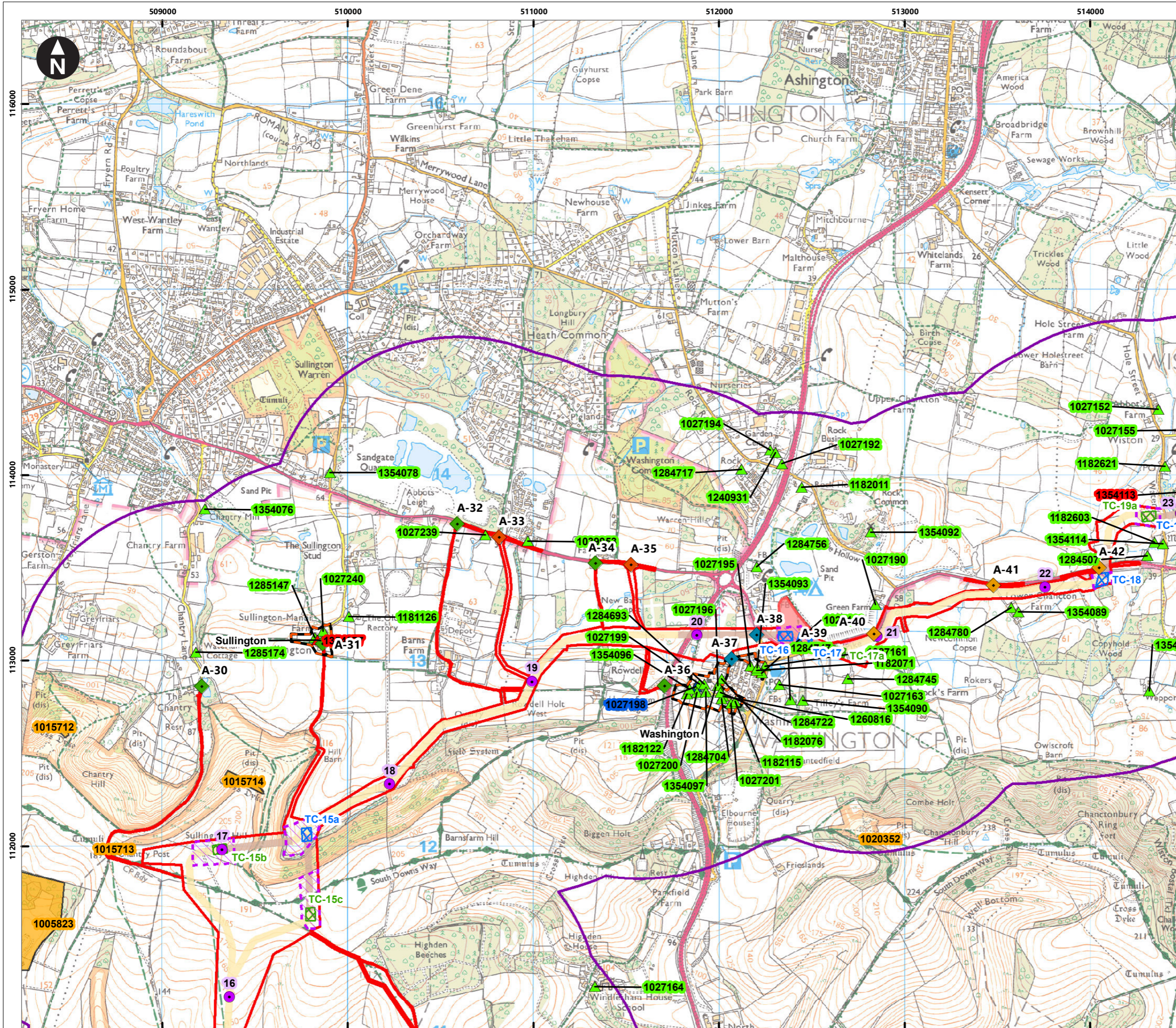
**Map Scale:**  
 0 0.1 0.2 0.4 0.6 0.8 Kilometres  
 1:20,000  
 British National Grid Transverse Mercator

**Map Labels:**  
 Rampton Extension Development  
**Rampton 2 WIND FARM**  
 Rampton 2 Offshore Wind Farm  
 Figure 25.2d Designated heritage assets within Study Area  
 Environmental Statement

**System Identifier:** 42285-WSP-ES-ON-FG-OH-6195  
**Version:** 1.0

**Company:** WSP  
**Drawn By:** SHEPS  
**Chk/Prvrd:** ASTBD  
**Drawn Date:** 24/07/2023  
**Status:** Final





Service Layer Credits: Contains OS data © Crown Copyright and database right 2023  
 © Crown copyright and database rights 2023 Ordnance Survey 0100031673

**Key**

- Proposed DCO Order Limits
- 1km study area
- Trenchless Crossing (TC) compounds
- Trenchless Crossing (TC) compound alternatives
- Trenchless Crossing (TC) limits of deviation
- Temporary construction compound

**Proposed onshore cable construction corridor**

- Indicative trenchless section
- Indicative open cut section

**Onshore cable route KM points**

- Onshore cable route

**Access from public highway**

- Construction
- Construction & operational
- Light construction
- Operational

**Conservation Areas**

- Scheduled Monuments

**Listed Buildings**

- I
- II\*
- II

**Rampion Extension Development**

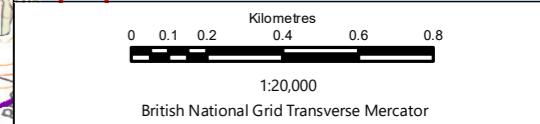
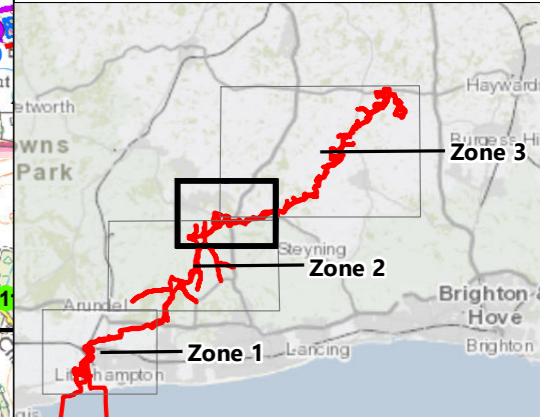
**Rampion 2 Offshore Wind Farm**

Figure 25.2e Designated heritage assets within Study Area

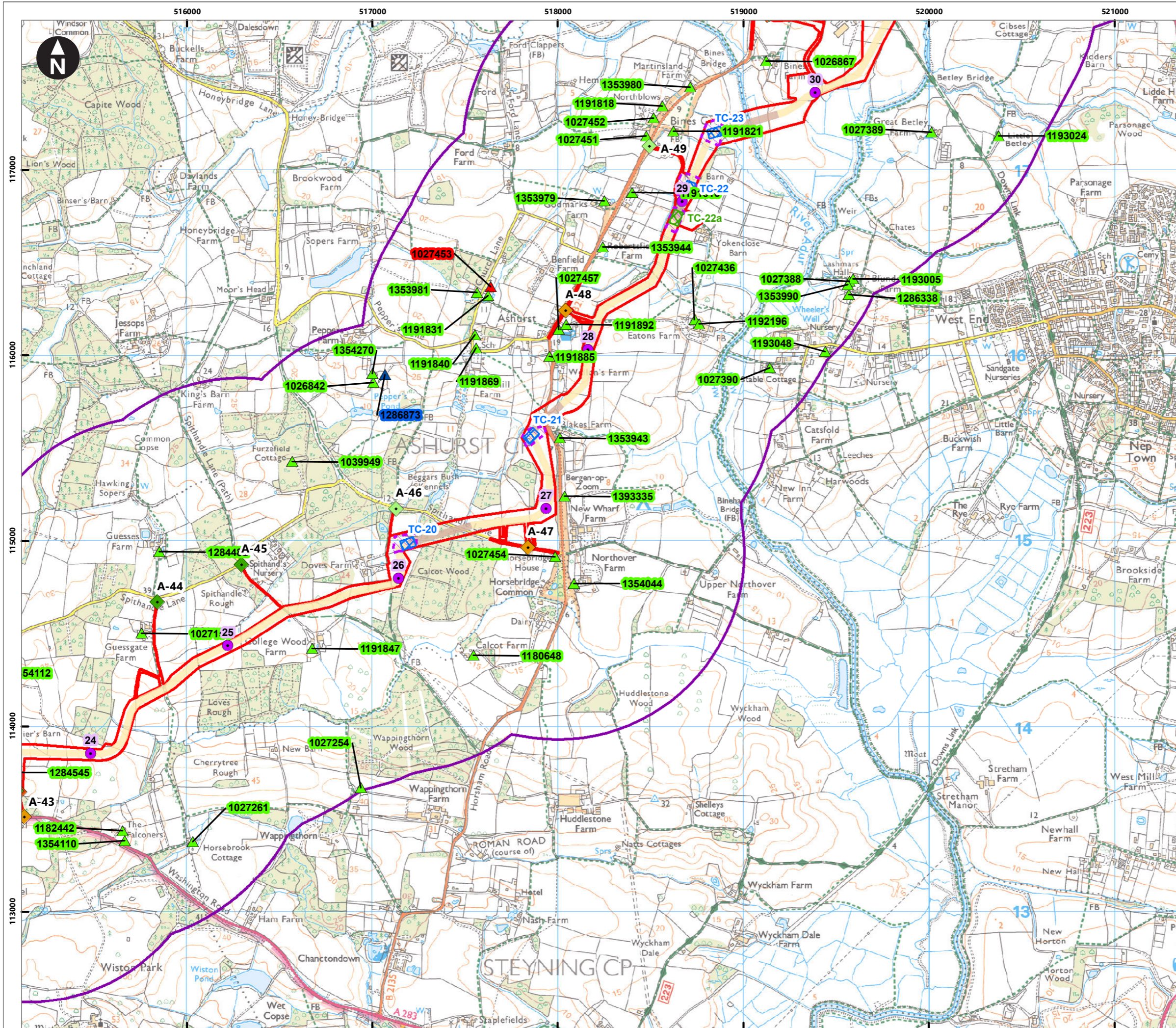
Environmental Statement

System Identifier: 42285-WSP-ES-ON-FG-OH-6195      Version: 1.0

Company: WSP      Drawn By: SHEPS      Chk/Prvrd: ASTBD      Drawn Date: 24/07/2023      Status: Final







Service Layer Credits: Contains OS data © Crown Copyright and database right 2023  
 © Crown copyright and database rights 2023 Ordnance Survey 0100031673

**Key**

- Proposed DCO Order Limits
- 1km study area
- Trenchless Crossing (TC) compounds
- Trenchless Crossing (TC) compound alternatives
- Trenchless Crossing (TC) limits of deviation

**Proposed onshore cable construction corridor**

- Indicative trenchless section
- Indicative open cut section

**Onshore cable route KM points**

- Onshore cable route

**Access from public highway**

- Construction
- Construction & operational
- Light construction & operational
- Operational

**Listed Buildings**

- I
- II\*
- II

0 0.1 0.2 0.4 0.6 0.8  
 Kilometres  
 1:20,000  
 British National Grid Transverse Mercator

Rampion Extension Development

**Rampion 2 Offshore Wind Farm**

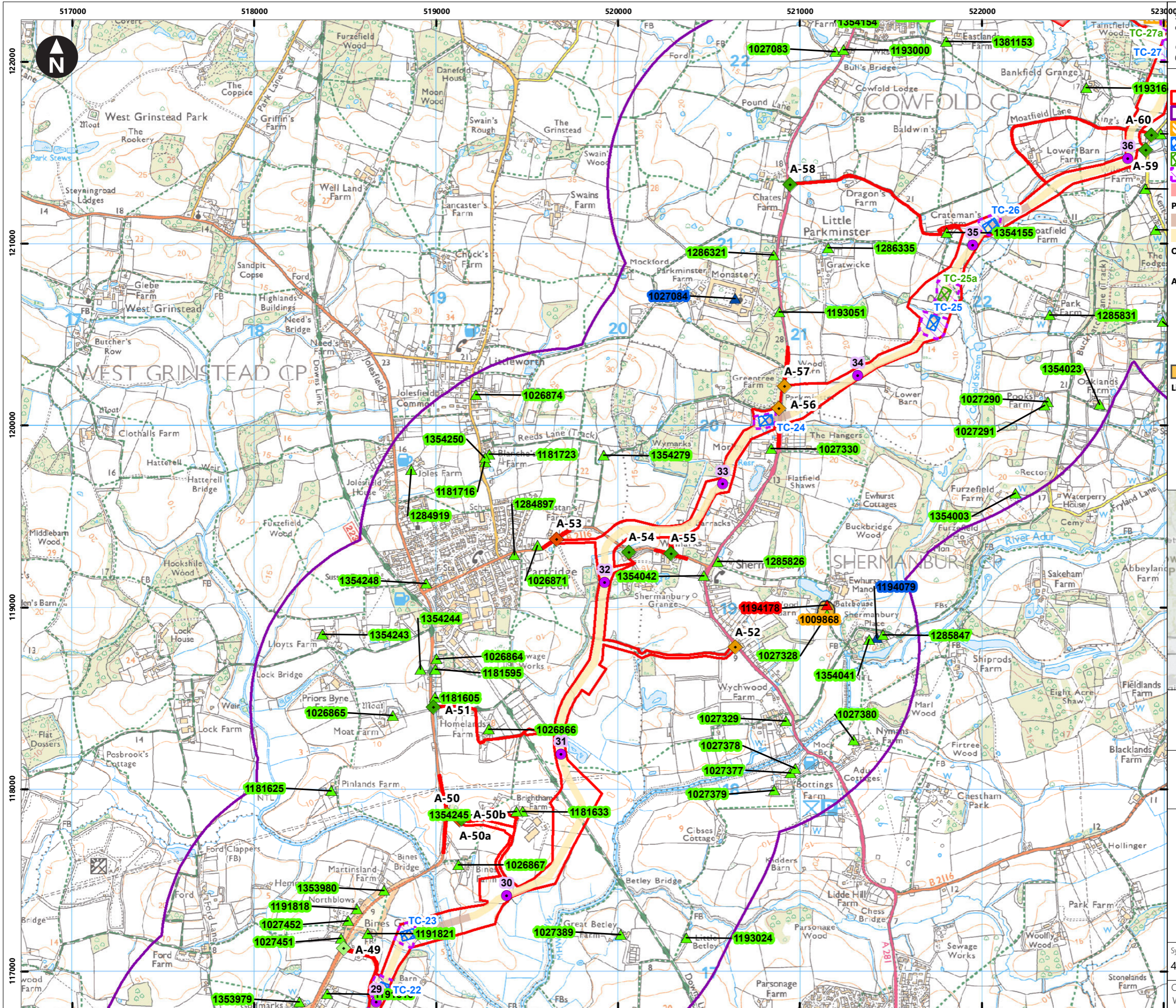
Figure 25.2f Designated heritage assets within Study Area

Environmental Statement

System Identifier: 42285-WSP-ES-ON-FG-OH-6195      Version: 1.0

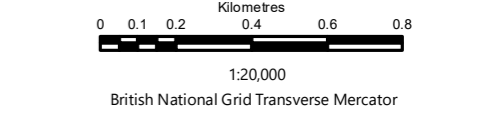
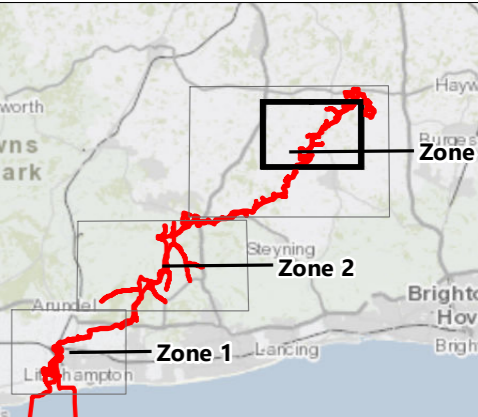
Company: WSP	Drawn By: SHEPS	Chk/Prvrd: ASTBD	Drawn Date: 24/07/2023	Status: Final
--------------	-----------------	------------------	------------------------	---------------





Service Layer Credits: Contains OS data © Crown Copyright and database right 2023  
 © Crown copyright and database rights 2023 Ordnance Survey 0100031673

- Key**
- Proposed DCO Order Limits
  - 1km study area
  - Oakdene substation site
  - Trenchless Crossing (TC) compounds
  - Trenchless Crossing (TC) compound alternatives
  - Trenchless Crossing (TC) limits of deviation
  - Temporary construction compound
- Proposed onshore cable construction corridor**
- Indicative trenchless section
  - Indicative open cut section
- Onshore cable route KM points**
- Onshore cable route
- Access from public highway**
- ◆ Construction
  - ◻ Construction & operational
  - ◆ Light construction & operational
  - ◻ Operational
- Scheduled Monuments**
- Scheduled Monuments
- Listed Buildings**
- ▲ I
  - ▲ II\*
  - ▲ II



Rampion Extension Development

Rampion 2 Offshore Wind Farm

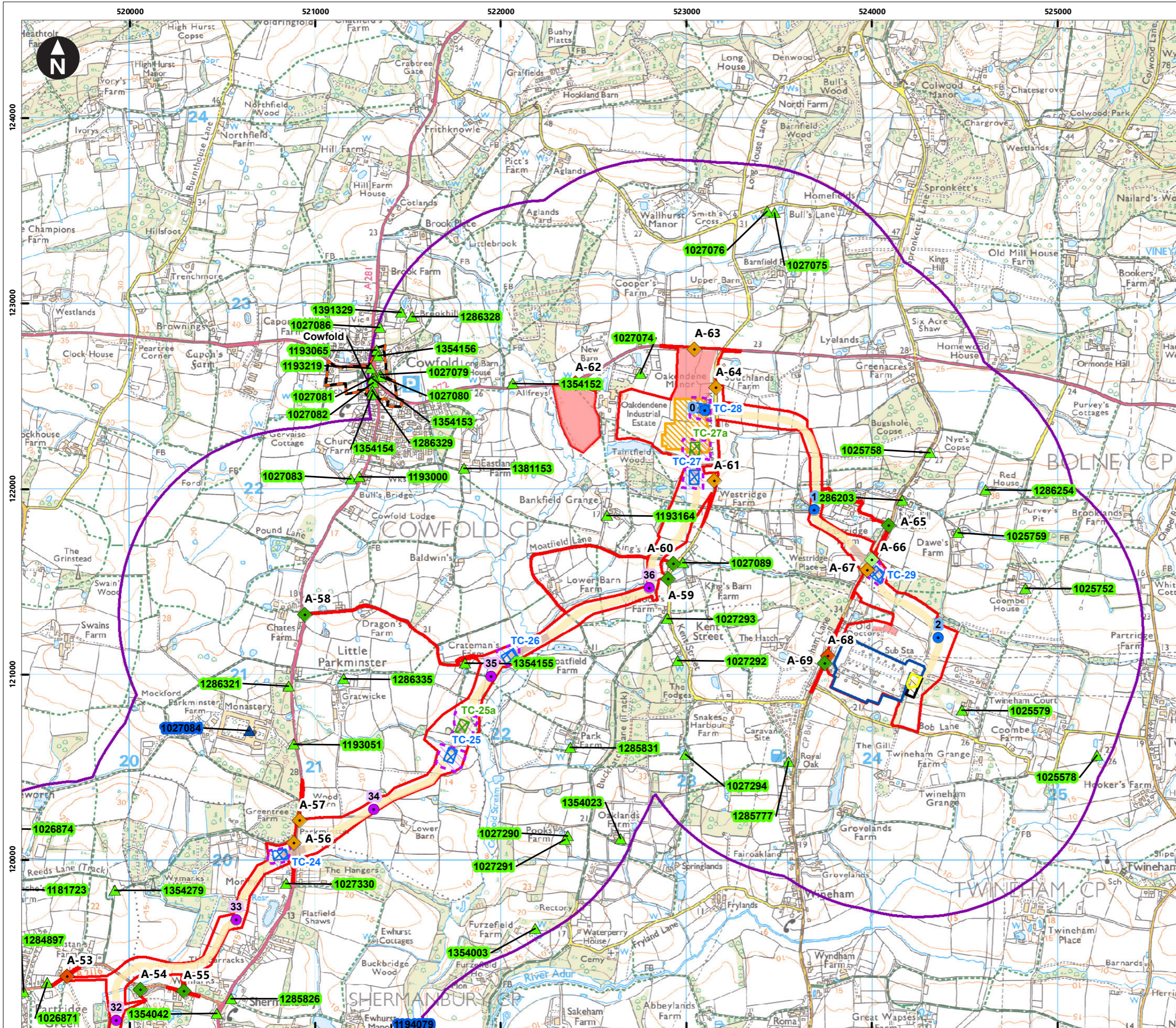
Figure 25.2g Designated heritage assets within Study Area

Environmental Statement

System Identifier: 42285-WSP-ES-ON-FG-OH-6195      Version: 1.0

Company: WSP	Drawn By: SHEPS	Chk/Prvrd: ASTBD	Drawn Date: 24/07/2023	Status: Final
--------------	-----------------	------------------	------------------------	---------------





Service Layer Credits: Contains OS data © Crown Copyright and database right 2023  
 © Crown copyright and database rights 2023 Ordnance Survey 0100031673

**Key**

- Proposed DCO Order Limits
- 1km study area
- Bolney Substation extension (AIS)
- Bolney Substation extension (GIS)
- Existing National Grid Substation
- Oakdene substation site
- Trenchless Crossing (TC) compounds
- Trenchless Crossing (TC) compound alternatives
- Trenchless Crossing (TC) limits of deviation
- Temporary construction compound

**Proposed onshore cable construction corridor**

- Indicative trenchless section
- Indicative open cut section

**Onshore cable route KM points**

- Onshore Substation connection
- Onshore cable route

**Access from public highway**

- Construction
- Construction & operational
- Light construction & operational
- Operational
- Conservation Areas

**Listed Buildings**

- II\*
- II

Rampion Extension Development

Rampion 2 Offshore Wind Farm

Figure 25.2h Designated heritage assets within Study Area

Environmental Statement

System Identifier: 42285-WSP-ES-ON-FG-OH-6195      Version: 1.0

Company: WSP      Drawn By: SHEPS      Chk/Prvrd: ASTBD      Drawn Date: 24/07/2023      Status: Final

